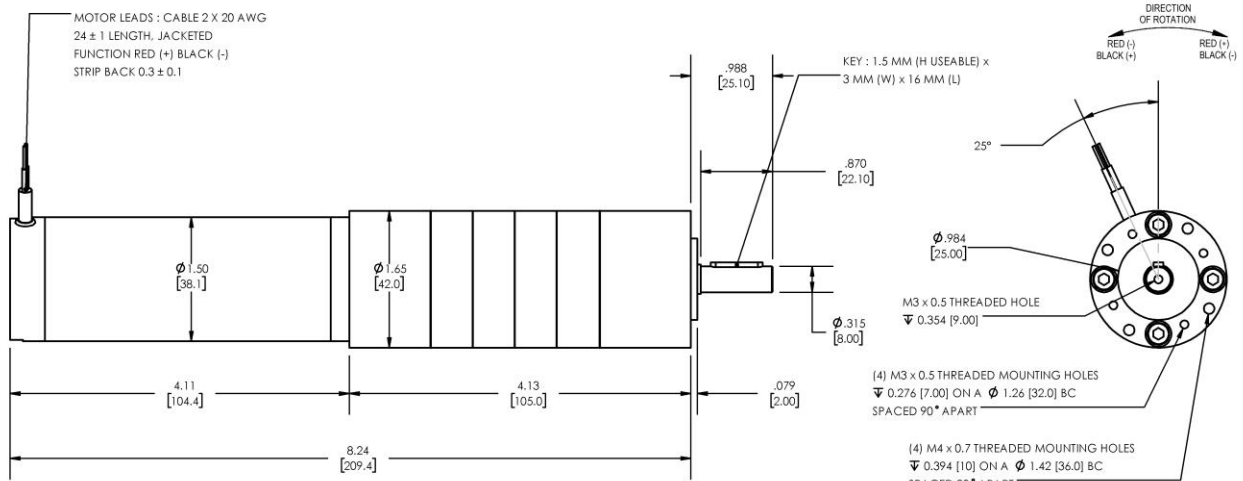


**Model Number:**  
**MMP S17-400C-12V GP42-1594**



DIMENSIONS ARE INCHES [MM] UNLESS OTHERWISE STATED

PLANETARY GEARMOTOR OUTPUT PARAMETERS:	VALUE	UNITS	TOLERANCE
Gearhead Ratio (exact)	1593.65 : 1		
Gearmotor Output Speed (at Cont. Torque)	2.0	RPM	+/- 15%
Gearmotor Rated Continuous Torque	266	In-Lbs	MAX
Gearmotor Peak Torque Capacity	<b>266++</b>	In-Lbs	MAX
Gearhead Standard Backlash	63	Arc Minutes	MAX
Gearhead Efficiency	65%	----	----
Output Shaft Radial Load Capacity	68	Lbs	MAX
Output Shaft Axial Load Capacity	25	Lbs	MAX
Gearmotor Total Weight	3.0	Lbs	MAX

**++ All Peak Torque values are dependent upon duty. Contact our sales office for details.**

DC MOTOR PERFORMANCE PARAMETERS:	VALUE	UNITS	TOLERANCE
Input DC Voltage	12	DC VOLTS	----
No-Load Current	0.54	AMPERES	MAX
No-Load Speed	3257	RPM	+/- 15%
Rated Continuous Torque	4.1	OZ-IN	MAX
Rated Continuous Current	1.4	AMPERES	MAX
Rated Speed (at Cont. Torque)	3203	RPM	+/- 15%
Rated Continuous Power Out	10	WATTS	+/- 15%
Peak Motor Torque	4.1	OZ-IN	MAX
Peak Motor Current	1.4	AMPERES	MAX
Back EMF Constant (Ke)	3.6	V/KRPM	+/- 10%
Torque Constant (Kt)	4.8	OZ-IN/AMP	+/- 10%
DC Armature Resistance	0.63	OHMS	+/- 15%
Armature Inductance	0.17	mH	+/- 15%
Number of Motor Poles	4	(-)	----
Armature temperature	155	DEG. C	MAX

NOTES:

1. Rated speeds may drop as the motor temperature increases. Values are stated with the motor at 25 °C.
2. All Peak Torque values are dependent upon duty. Contact our sales office for details.

ENCODER & BRAKE OPTIONS AVAILABLE – [FOLLOW THIS LINK FOR DETAILS](#)

NEMA MOUNTING FLANGE OPTION AVAILABLE – [FOLLOW THIS LINK FOR DETAILS](#)